

VACUUM KF COMPONENTS

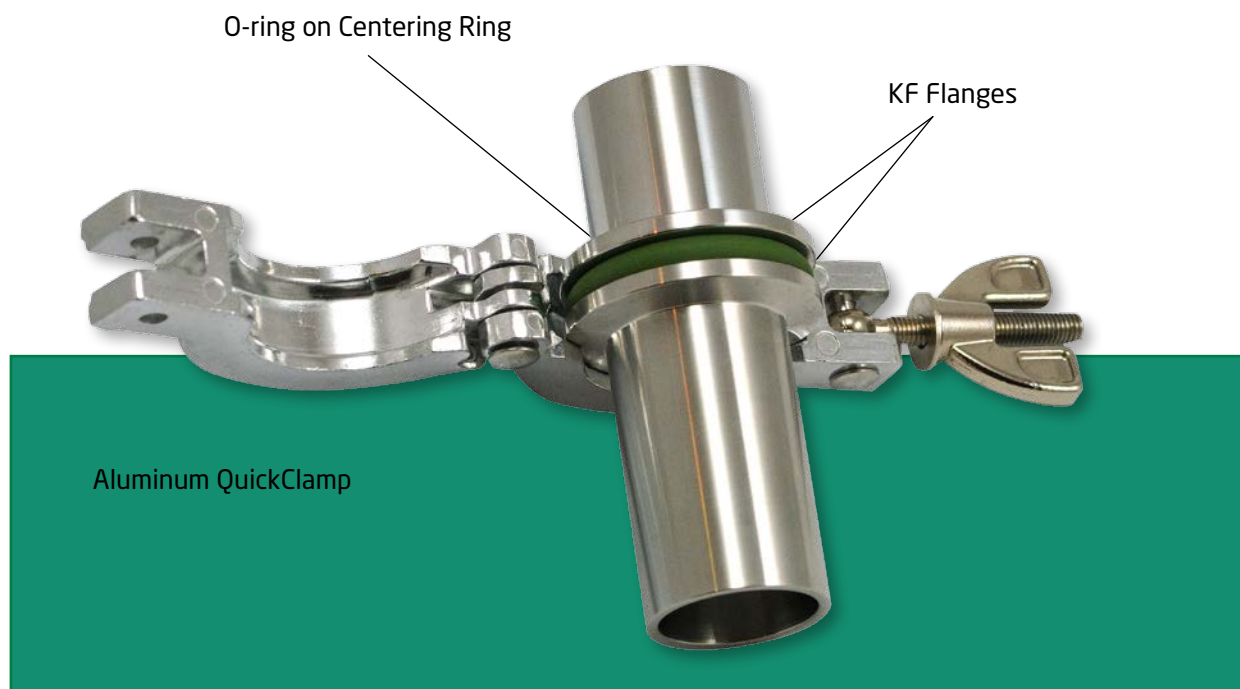
- Flanges and Connectors D 09

KF flanges utilize an Aluminum clamp with a single wingnut fastener allowing frequent disassembly without tools. The vacuum seal is effected by uniform application of pressure by the clamp on the 15° surface of the flange. The mating flange surfaces compress an "O"-ring (held in place by a metal centering ring) to produce a seal that can be used in vacuum applications down to 10^{-7} mbar and baked to 200°C (sustained to 150°C), for Viton O-ring.

The KF range of flanges and fittings are manufactured from high quality 316L (1.4404) Stainless Steel*. Some items are also available in Aluminum.

All given dimensions are nominal in mm.

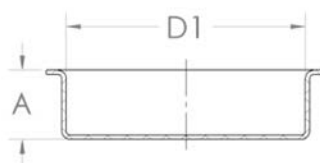
*304L (1.4407) available on request.



Flanges and Connectors

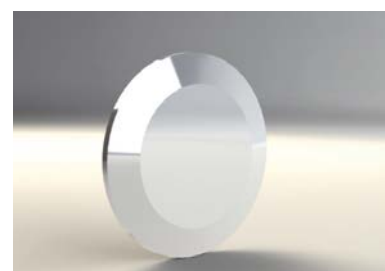
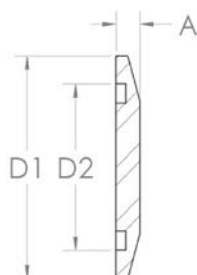
FLANGE CAPS - PLASTIC

P/N	DN	PACK SIZE	A	D1
KF16CAP	16	10	11	30
KF25CAP	25	10	11	40
KF40CAP	40	10	11	55
KF50CAP	50	10	11	75



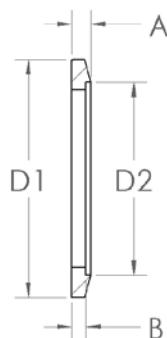
BLANK FLANGE

P/N	DN	MATERIAL	A	D1	D2
KF16BS KF16BA	16	Stainless Steel Aluminum	6	30	17.2
KF25BS KF25BA	25	Stainless Steel Aluminum	6	40	26.2
KF40BS KF40BA	40	Stainless Steel Aluminum	6	55	41.2
KF50BS KF50BA	50	Stainless Steel Aluminum	6	75	52.2



BORED FLANGE - STAINLESS STEEL

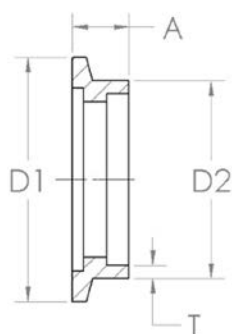
P/N	DN	A	B	D1	D2
KF16B16	16	4.3	3.3	30	20.0
KF16B19	16	4.3	3.3	30	19.05
KF25B24	25	4.6	3.5	40	28.0
KF25B25	25	4.6	3.5	40	25.4
KF40B38	40	4.4	3.3	55	38.1
KF40B41	40	4.4	3.3	55	44.5
KF50B50	50	5.4	4.4	75	50.8
KF50B51	50	5.4	4.4	75	57.0



Special bores are available on request.

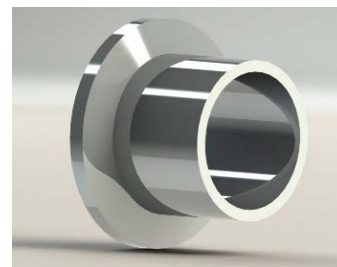
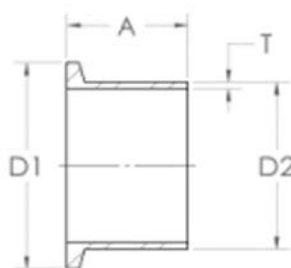
SOCKET WELD FLANGE - STAINLESS STEEL

P/N	DN	A	D1	D2	T
KF16W11	16	12.7	30	15.5	1.25
KF16W	16	12.7	30	22.1	1.40
KF25W	25	12.7	40	28.6	1.35
KF40W	40	12.7	55	44.5	2.95
KF50W	50	12.7	75	57.2	2.95



TUBULATION SHORT WELD FLANGE - STAINLESS STEEL

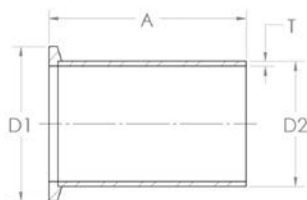
P/N	DN	A	D1	D2	T
TU16KS	16	30.0	30	20.0	2.0
TU25KS	25	30.0	40	28.0	2.0
TU40KS	40	30.0	55	44.5	1.6
TU50KS	50	30.0	75	57.0	3.0
TU16KSUS	16	12.7	30	19.1	1.7
TU25KSUS	25	12.7	40	25.4	1.7
TU40KSUS	40	19.0	55	38.1	1.7
TU50KSUS	50	19.0	75	50.8	1.7



Special lengths and diameters are available on request.

TUBULATION LONG WELD FLANGE - STAINLESS STEEL

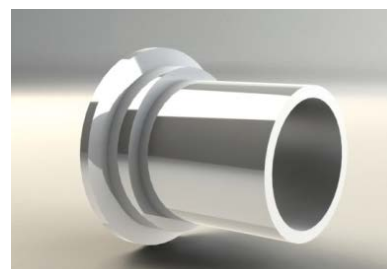
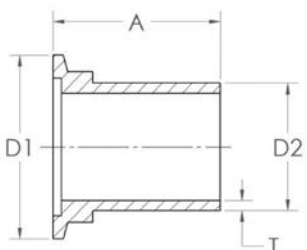
P/N	DN	A	D1	D2	T
TU16KL	16	70	30	20.0	2.0
TU25KL	25	70	40	28.0	2.0
TU40KL	40	70	55	44.5	1.6
TU50KL	50	70	75	57.0	3.0
TU16KLUS	16	40	30	19.1	1.7
TU25KLUS	25	40	40	25.4	1.7
TU40KLUS	40	40	55	38.1	1.7
TU50KLUS	50	40	75	50.8	1.7



Special lengths and diameters are available on request.

HOSE ADAPTER - STAINLESS STEEL

P/N	DN	A	D1	D2	T
KF16TUH12	16	32.0	30	12.7	1.70
KF16TUH	16	32.0	30	19.1	1.55
KF25TUH	25	38.1	40	25.4	1.70
KF40TUH	40	50.0	55	38.1	1.70
KF50TUH	50	55.0	75	50.8	1.70



Special lengths and diameters are available on request.

➔ See Section D - KF Components
- Bellows and Hoses in this catalogue about PVC Hose.

STRAIGHT CONNECTOR - STAINLESS STEEL

P/N	DN	A	D1	D2	T
SC16K	16	80	30	20.0	2.0
SC25K	25	100	40	28.0	2.0
SC40K	40	130	55	44.5	1.6
SC50K140	50	140	75	57.0	3.0



Special lengths and diameters are available on request.



neyco

30 avenue de la Paix
92170 VANVES - France
Tel: +33(0)1 41 90 50 50
Fax: +33(0)1 41 90 50 51

www.neyco.fr



Vacuum D 2013-3

neyco