

VACUUM KF COMPONENTS

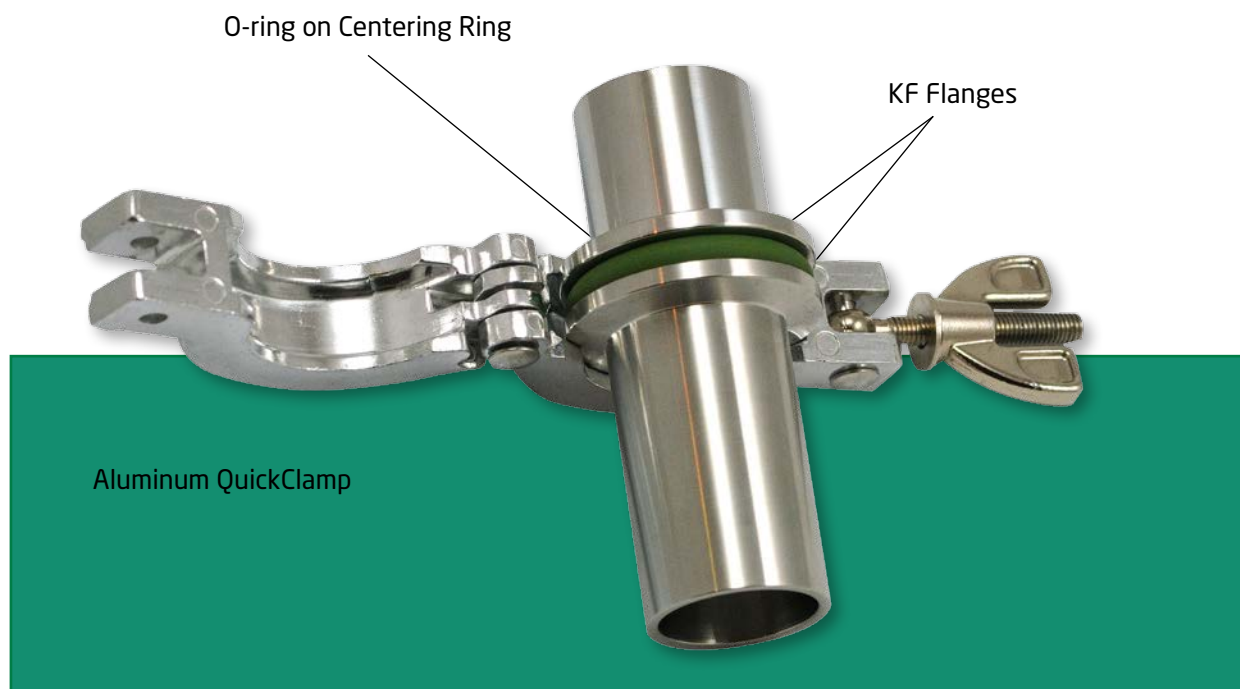
- Bellows and Hoses D 24

KF flanges utilize an Aluminum clamp with a single wingnut fastener allowing frequent disassembly without tools. The vacuum seal is effected by uniform application of pressure by the clamp on the 15° surface of the flange. The mating flange surfaces compress an "O"-ring (held in place by a metal centering ring) to produce a seal that can be used in vacuum applications down to 10^{-7} mbar and baked to 200°C (sustained to 150°C), for Viton O-ring.

The KF range of flanges and fittings are manufactured from high quality 316L (1.4404) Stainless Steel*. Some items are also available in Aluminum.

All given dimensions are nominal in mm.

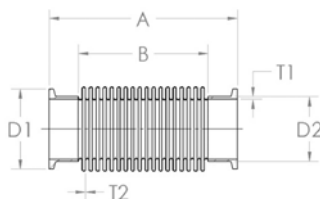
*304L (1.4407) available on request.



Bellows and Hoses

FLEXIBLE BELLOWS

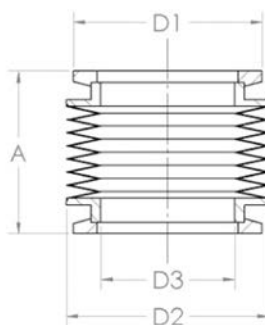
P/N	DN	A	B	D1	D2	T1	T2
KF16FXB	16	121	88.0	30	20.0	2.0	0.10
KF25FXB	25	121	85.7	40	27.0	1.5	0.15
KF40FXB	40	121	83.0	55	44.5	1.6	0.20
KF50FXB	50	110	76.0	75	57.0	3.0	0.25



Material: Stainless Steel.

EDGE WELDED BELLOWS

P/N	DN	A	D1	D2	D3
KF16EWB	16	55	30	31.5	16.0
KF25EWB	25	55	40	46.0	24.0
KF40EWB	40	55	55	59.0	40.4
KF50EWB	50	55	75	76.0	51.0

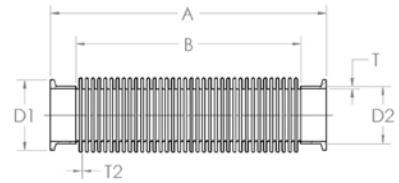


Material: Stainless Steel.

➔ See Section K - Bellows & Movement Feedthroughs / Welded Bellows in this catalogue about special welded bellows.

FLEXIBLE ANNEALED HOSE

P/N	DN	A	B	D1	D2	T	T2
FX16K25	16	250	220	30	20.0	2.0	0.23
FX16K50	16	500	470	30	20.0	2.0	0.23
FX16K75	16	750	720	30	20.0	2.0	0.23
FX16K100	16	1000	970	30	20.0	2.0	0.23
FX25K25	25	250	220	40	27.0	1.5	0.23
FX25K50	25	500	470	40	27.0	1.5	0.23
FX25K75	25	750	720	40	27.0	1.5	0.23
FX25K100	25	1000	970	40	27.0	1.5	0.23
FX40K25	40	250	220	55	44.5	1.6	0.23
FX40K50	40	500	470	55	44.5	1.6	0.23
FX40K75	40	750	720	55	44.5	1.6	0.23
FX40K100	40	1000	970	55	44.5	1.6	0.23
FX50K25	50	250	220	75	57.0	3.0	0.23
FX50K50	50	500	470	75	57.0	3.0	0.23
FX50K75	50	750	720	75	57.0	3.0	0.23
FX50K100	50	1000	970	75	57.0	3.0	0.23

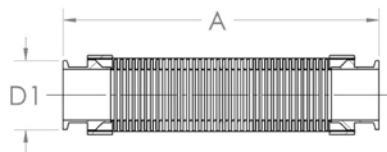


Material: Stainless Steel.

Custom lengths are available on request, standard hoses are annealed, un-annealed can be supplied if required.

BRAIDED FLEXIBLE HOSE - 5 BARS

P/N	DN	A	D1
BFX25K13	25	135	40
BFX25K25	25	250	40
BFX25K50	25	500	40
BFX25K100	25	1000	40
BFX40K13	40	135	55
BFX40K25	40	250	55
BFX40K50	40	500	55
BFX40K100	40	1000	55
BFX50K13	50	135	75
BFX50K25	50	250	75
BFX50K50	50	500	75
BFX50K100	50	1000	75

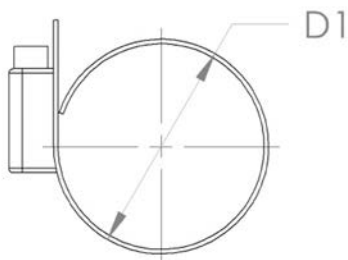


Material: Stainless Steel.

HOSE CLAMPS

P/N	DN	D1
KF16HC	10/16	25
KF25HC	25	36
KF40HC	40	50
KF50HC	50	60

Material: Stainless Steel.



WIRE REINFORCED HOSE - PVC

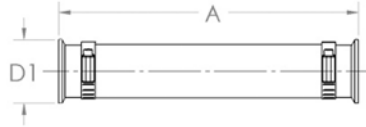
P/N	DN	A	D1 NOMINAL BORE
PVC16	16	1000	19.05
PVC25	25	1000	25.40
PVC40	40	1000	38.10
PVC50	50	1000	50.80

Length on request.



HOSE CONNECTORS - PVC / STAINLESS STEEL

P/N	DN	A	D1
KF16PVC25	16	250	30
KF16PVC50	16	500	30
KF16PVC75	16	750	30
KF16PVC100	16	1000	30
KF25PVC25	25	250	40
KF25PVC50	25	500	40
KF25PVC75	25	750	40
KF25PVC100	25	1000	40
KF40PVC25	40	250	55
KF40PVC50	40	500	55
KF40PVC75	40	750	55
KF40PVC100	40	1000	55
KF50PVC25	50	250	75
KF50PVC50	50	500	75
KF50PVC75	50	750	75
KF50PVC100	50	1000	75



D

SLEEVE WITH HOSE CLAMP

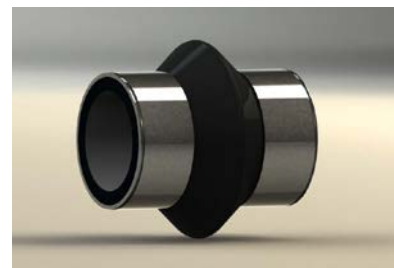
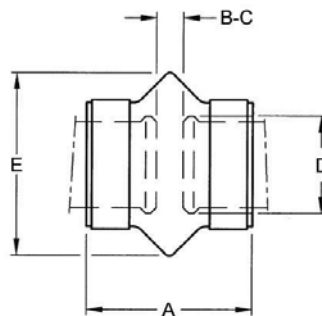
P/N	DN	A	B	C	D	E
KF16SHC	16	58	7	14	16	44
KF25SHC	25	60	9	16	25	50
KF40SHC	40	64	13	20	40	68

Hose clamp: Stainless Steel 430.

Sleeve: Elastomer.

Max. internal pressure: 1 bar.

Supplied with clamps.





neyco

30 avenue de la Paix
92170 VANVES - France
Tel: +33(0)1 41 90 50 50
Fax: +33(0)1 41 90 50 51

www.neyco.fr



Vacuum D 2013-3

neyco