

VACUUM ISO COMPONENTS

- Bellows and Hoses E 17

There are four different configurations to fit together ISO flanges.

Figure 1 illustrates the double claw-clamp assembly which is the most commonly used configuration.

Figure 2 shows the wall clamp assembly where a claw-clamp flange is mounted to a rotatable bolt ring. This assembly combines the claw-clamp flange and bolt flanges with nuts and bolts. The rotatable bolt ring and fixed bolted assembly is shown in figure 3. The rotatable bolt ring consists of a rotatable outer ring and a split retainer ring to hold the claw-clamp in place. Finally configuration 4 shows a bolted fixed flange and a tapped flange, or chamber wall for example.

All four configurations use an O-ring seal held in place by a centering ring. This is effective down to 10^{-7} mbar. With Viton O-ring assemblies bakeable to 200°C (sustained 150°C).

The ISO range of flanges and fittings are manufactured from high quality 316L (1.4404) Stainless Steel*.

All given dimensions are nominal in mm.

*304L (1.4306) available on request.



Figure 1



Figure 2



Figure 3

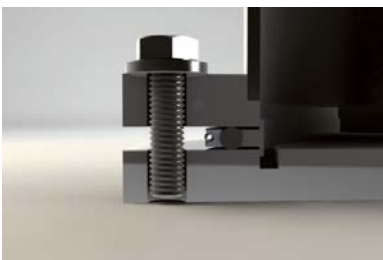
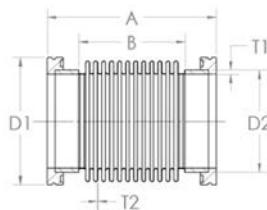


Figure 4

Bellows and Hoses

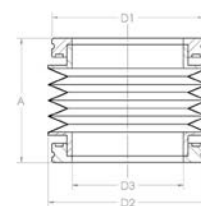
ISO FLEXIBLE BELLOWS - STAINLESS STEEL

P/N	DN	A	B	D1	D2	T1	T2
ISO63FXB	63	127	70	95	76	3.0	0.2
ISO80FXB	80	127	70	110	89	3.0	0.2
ISO100FXB	100	127	60	130	108	3.0	0.4
ISO160FXB	160	220	112	180	159	3.0	0.4
ISO200FXB	200	220	170	240	219	3.0	0.6



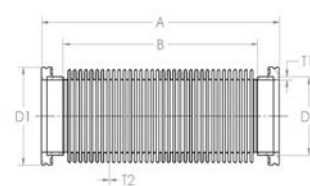
ISO EDGE WELDED BELLOWS - STAINLESS STEEL

P/N	DN	CONVOLUTIONS	STROKE	A	D1	D2	D3	BELLOWS ID
ISO63EWB	63	11	30.8	100	95	100	70	75
ISO100EWB	100	11	33.0	115	130	132	104	102
ISO160EWB	160	13	44.2	140	180	185	153	150



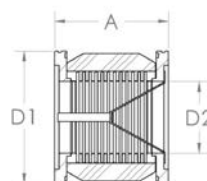
ISO FLEXIBLE HOSE - STAINLESS STEEL

P/N	DN	A	B	D1	D2	T1	T2
ISO63FX25	63	250	172	95	76	3	0.28
ISO63FX50	63	500	422	95	76	3	0.28
ISO63FX75	63	750	672	95	76	3	0.28
ISO63FX100	63	1000	922	95	76	3	0.28
ISO80FX25	80	250	166	110	89	3	0.28
ISO80FX50	80	500	416	110	89	3	0.28
ISO80FX75	80	750	666	110	89	3	0.28
ISO80FX100	80	1000	916	110	89	3	0.28
ISO100FX25	100	250	181	130	108	3	0.28
ISO100FX50	100	500	431	130	108	3	0.28
ISO100FX75	100	750	681	130	108	3	0.28
ISO100FX100	100	1000	931	130	108	3	0.28
ISO160FX25	160	250	170	180	159	3	0.38
ISO160FX50	160	500	420	180	159	3	0.38
ISO160FX75	160	750	670	180	159	3	0.38
ISO160FX100	160	1000	920	180	159	3	0.38



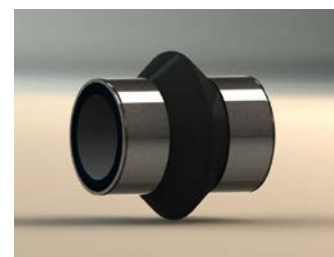
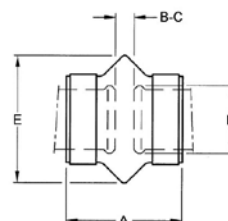
ISO VIBRATION ISOLATOR - STAINLESS STEEL

P/N	DN	A	D1	D2
ISO63VBD	63	85	95	52
ISO100VBD	100	85	130	76
ISO160VBD	160	85	180	95



SLEEVE WITH HOSE CLAMP

P/N	DN	A	B	C	D	E
ISO63SHC	63	70	14	24	75	120
ISO100SHC	100	72	8	26	106	150
ISO160SHC	160	72	8	26	155	200





neyco

30 avenue de la Paix
92170 VANVES - France
Tel: +33(0)1 41 90 50 50
Fax: +33(0)1 41 90 50 51

www.neyco.fr



Vacuum E 2013-5

neyco