

VACUUM
CF
COMPONENTS

- Adaptors..... F 13

The CF series flanges use the well proven captured copper gasket sealing principle which is now almost universally used in the UHV industry. The seal - an OFHC* copper gasket - is held between the knife edges of a pair of CF flanges. On tightening the retaining bolts, the knife edges cut into the gasket and force the copper both axially as well as radially outwards to the flange. The material is thus enclosed and cannot flow, even at high bakeout temperatures. This sealing method has a maximum bakeout temperature of 450°C and is suitable for vacuum applications to 10^{-12} mbar.

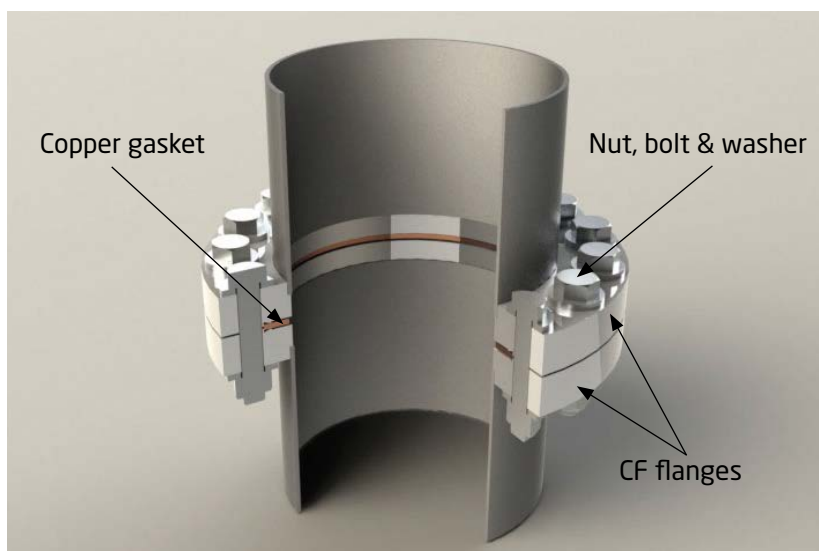
All CF flanges are manufactured from specially selected, high quality Stainless Steel - 304L** (1.4306) or the higher specification 316LN (1.4429). These materials being the accepted standards throughout the UHV vacuum industry. Both Stainless Steels are low carbon varieties designed to avoid inter-granular corrosion after welding. 316LN has the additional advantages of a lower magnetic permeability, harder knife edge, and high temperature H₂ degassing at up to 950°C. Full traceability is available on all materials used.

Protective mouldings and suitable packing ensures that the flanges reach the customer in perfect condition for use on UHV equipment. The product range includes blank, bored and rotatable flanges in all of the internationally approved sizes. Other sizes and special flanges are available to order.

All given dimensions are nominal in mm.

*OFHC: Oxygen-free high conductivity.

**316L (1.4404) available on request.

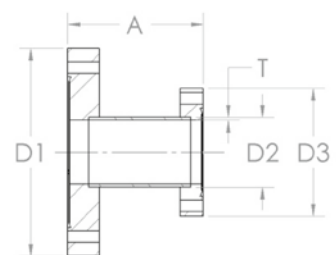
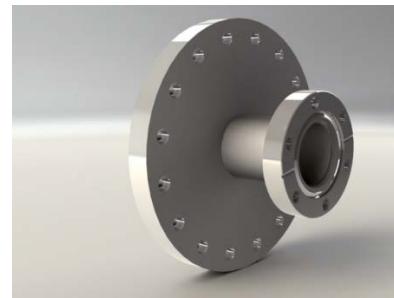


Adaptors

F

CF TUBULATED REDUCER FIXED - STAINLESS STEEL

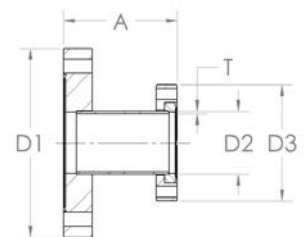
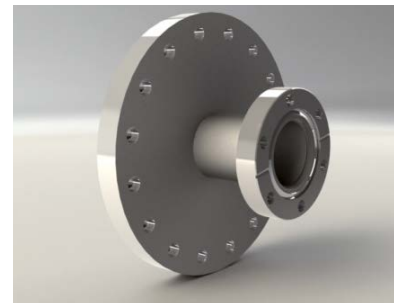
P/N	DN	A	D1	D2	D3	T
TA3516	16/35	70	70	19	34	1.6
TA6316	16/63	70	114	19	34	1.6
TA6335	35/63	70	114	38	70	1.6
TA1035	35/100	70	152	38	70	1.6
TA1063	63/100	70	152	63.5	114	1.6
TA1535	35/150	70	203	38	70	1.6
TA1563	63/150	127	203	63.5	114	1.6
TA1510	100/150	127	203	101.6	152	1.6
TA2063	63/200	127	254	63.5	114	1.6
TA2010	100/200	127	254	101.6	152	1.6
TA2015	150/200	127	254	152.4	203	2.0



Please note that certain flange combinations give you both in-line & straddled bolt holes on a single adaptor.

CF TUBULATED REDUCER ROTATABLE - STAINLESS STEEL

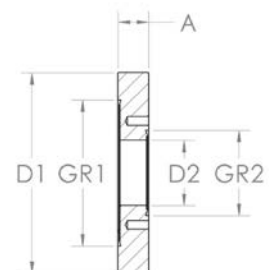
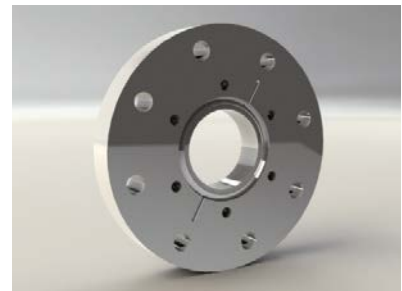
P/N	DN	A	D1	D2	D3	T
TA3516R	16/35	70	70	19	34	1.6
TA6316R	16/63	70	114	19	34	1.6
TA6335R	35/63	70	114	38	70	1.6
TA1035R	35/100	70	152	38	70	1.6
TA1063R	63/100	70	152	63.5	114	1.6
TA1535R	35/150	70	203	38	70	1.6
TA1563R	63/150	127	203	63.5	114	1.6
TA1510R	100/150	127	203	101.6	152	1.6
TA2063R	63/200	127	254	63.5	114	1.6
TA2010R	100/200	127	254	101.6	152	1.6
TA2015R	150/200	127	254	152.4	203	2.0



Special lengths and diameters are available on request.

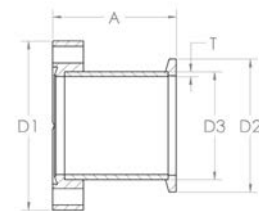
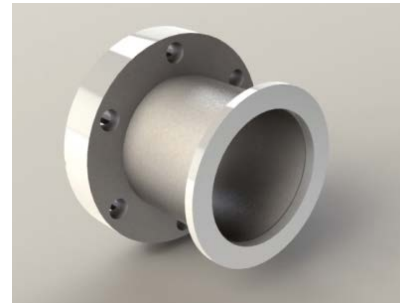
CF ZERO LENGTH REDUCER FLANGE - STAINLESS STEEL

P/N	DN	A	D1	D2	GR1	GR2
ZL3516	16/35	12.7	70	13.2	48	21
ZL6316	16/63	17.4	114	13.2	82	21
ZL6335	35/63	17.4	114	36.9	82	48
ZL1035	35/100	19.9	152	36.9	120	48
ZL1063	63/100	19.9	152	61.2	120	82
ZL1535	35/150	22.2	203	36.9	171	48
ZL1563	63/150	22.2	203	61.2	171	82
ZL1510	100/150	22.2	203	99.4	171	120
ZL2035	35/200	24.6	254	36.9	222	48
ZL2063	63/200	24.6	254	61.2	222	82
ZL2010	100/200	24.6	254	99.4	222	120
ZL2015	150/200	24.6	254	149.7	222	171
ZL2535	35/250	27.3	304	36.9	270	48
ZL2563	63/250	27.3	304	61.2	270	82
ZL2510	100/250	27.3	304	99.4	270	120
ZL2515	150/250	27.3	304	149.7	270	171
ZL2520	200/250	27.3	304	200.4	270	222



CF TO KF ADAPTOR - STAINLESS STEEL

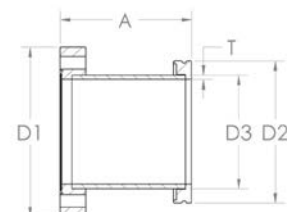
P/N	DN	A	D1	D2	D3	T
KA1616	16/16	36	34	30	20.0	2
KA3516	35/16	36	70	30	20.0	2
KA3525	35/25	36	70	40	28.0	2
KA3540	35/40	50	70	55	44.5	2
KA6325	63/25	50	114	40	28.0	2
KA6340	63/40	50	114	55	44.5	2
KA6350	63/50	50	114	75	57.0	3
KA1025	100/25	50	152	40	28.0	2
KA1040	100/40	50	152	55	44.5	2
KA1050	100/50	50	152	75	57.0	3
KA1525	150/25	70	203	40	28.0	2
KA1540	150/40	70	203	55	44.5	2
KA1550	150/50	70	203	75	57.0	3



Special lengths and diameters are available on request.

CF TO ISO ADAPTOR - STAINLESS STEEL

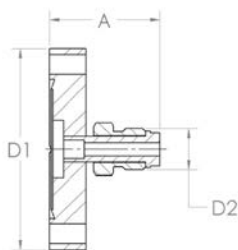
P/N	DN	A	D1	D2	D3	T
SA6363	63/63	90	114	95	63.5	1.6
SA1063	63/100	90	152	95	76.0	3.0
SA1010	100/100	90	152	130	108.0	3.0
SA1016	160/100	90	152	180	101.6	1.6
SA1510	100/150	90	203	130	108.0	3.0
SA1516	160/150	90	203	180	159.0	3.0



Special lengths and diameters are available on request.

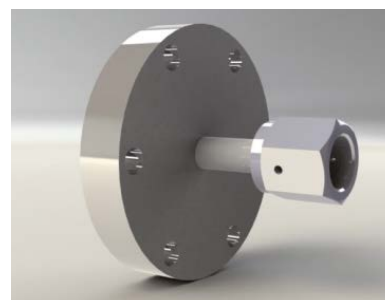
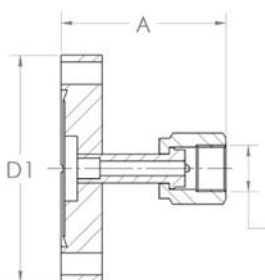
CF MALE VCR ADAPTOR - STAINLESS STEEL

P/N	DN	A	D1	D2
F16VCR6M	16	36	34	1/4"
F16VCR13M	16	41	34	1/2"
F35VCR6M	35	41	70	1/4"
F35VCR13M	35	46	70	1/2"
F35VCR19M	35	53	70	3/4"



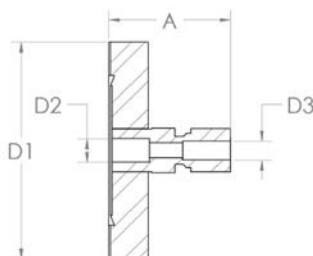
CF FEMALE VCR ADAPTOR - STAINLESS STEEL

P/N	DN	A	D1	D2
F16VCR6F	16	36	34	1/4"
F16VCR13F	16	41	34	1/2"
F35VCR6F	35	41	70	1/4"
F35VCR13F	35	46	70	1/2"
F35VCR19F	35	53	70	3/4"



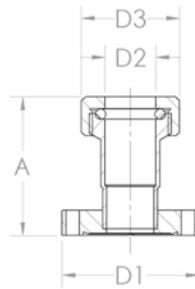
CF TO IMPERIAL PIPE ADAPTOR - STAINLESS STEEL

P/N	DN	A	D1	D2	D3
F16SWA7	16	36	34	4.8	1/4"
F16SWA13	16	41	34	10.4	1/2"
F35SWA7	35	36	70	4.8	1/4"
F35SWA13	35	48	70	10.4	1/2"



CF COMPRESSION FIT TUBING ADAPTOR - STAINLESS STEEL

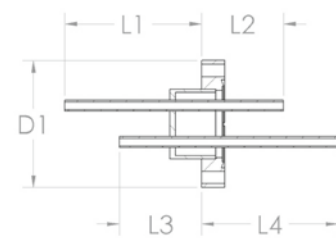
P/N	DN	A	D1	D2	D3
F16TA12	16	50	34	13.1	30
F35TA12	40	50	70	13.1	30
F35TA25	40	62	70	25.8	50
F35TA38	40	84	70	38.4	62
F63TA50	63	87	114	51.5	75



CF LIQUID NITROGEN FEEDTHROUGHS - STAINLESS STEEL

F

P/N	DN	D1	L1	L2	L3	L4	TUBE DIA.	PIPE FITTING
SINGLE FEEDTHROUGH								
LNF16PP	16	34	45	75	-	-	6	PP
LNF16SP	16	34	45	103	-	-	6	SP
LNF16SS	35	34	103	103	-	-	6	SS
LNF35PP	35	70	45	75	-	-	6	PP
LNF35SP	35	70	45	103	-	-	6	SP
LNF35SS	35	70	103	103	-	-	6	SS
2-WAY FEEDTHROUGH. FIGURE 1.								
LNF352PP	35	70	75	45	45	75	6	PP
LNF352SP	35	70	75	73	45	103	6	SP
LNF352SS	35	70	103	73	73	103	6	SS



Pipe fitting, first letter indicates termination on vacuum side, second atmosphere.
P = Plain. S = 6mm or 12mm metric fitting.

Figure 1

CF LIQUID FEEDTHROUGHS - STAINLESS STEEL

P/N	DN	D1	L1	L2	L3	L4	TUBE DIA.	PIPE FITTING
SINGLE FEEDTHROUGH								
LF16PP	16	34	45	75	-	-	6	PP
LF16SP	16	34	45	103	-	-	6	SP
LF16SS	16	34	103	103	-	-	6	SS
LF35PP	35	70	45	75	-	-	6	PP
LF35SP	35	70	45	103	-	-	6	SP
LF35SS	35	70	103	103	-	-	6	SS
DOUBLE FEEDTHROUGH. FIGURE 1.								
LF352PP	35	70	45	75	75	45	6	PP
LF352SP	35	70	45	103	75	73	6	SP
LF352SS	35	70	73	103	103	73	6	SS

Pipe fitting, first letter indicates termination on vacuum side, second atmosphere.
 P = Plain. S = 6mm or 12mm metric fitting.

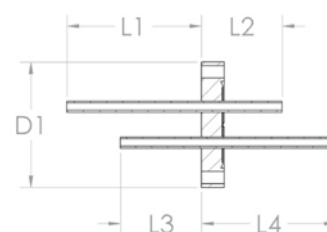


Figure 1



neyco

30 avenue de la Paix
92170 VANVES - France
Tel: +33(0)1 41 90 50 50
Fax: +33(0)1 41 90 50 51

www.neyco.fr



Vacuum F 2013-2

neyco