

VACUUM CF COMPONENTS

F

- Elbows, Tees and Crosses F 19

The CF series flanges use the well proven captured copper gasket sealing principle which is now almost universally used in the UHV industry. The seal - an OFHC* copper gasket - is held between the knife edges of a pair of CF flanges. On tightening the retaining bolts, the knife edges cut into the gasket and force the copper both axially as well as radially outwards to the flange. The material is thus enclosed and cannot flow, even at high bakeout temperatures. This sealing method has a maximum bakeout temperature of 450°C and is suitable for vacuum applications to 10^{-12} mbar.

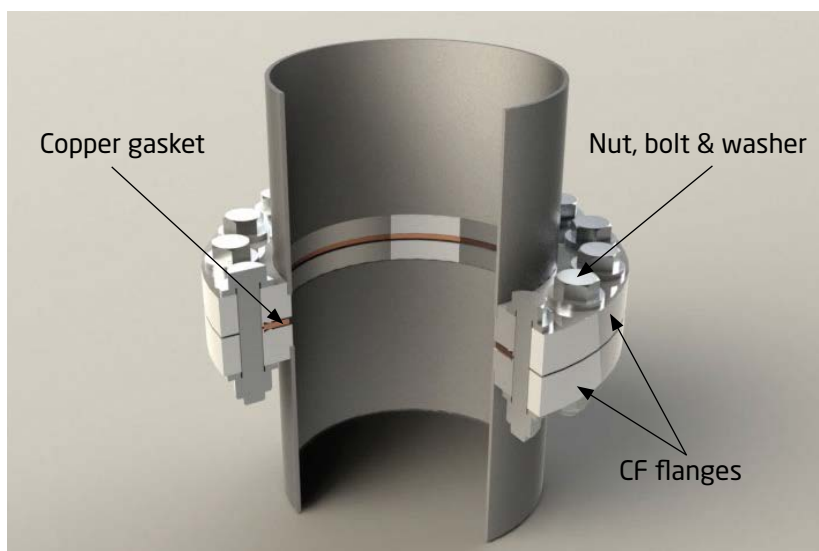
All CF flanges are manufactured from specially selected, high quality Stainless Steel - 304L** (1.4306) or the higher specification 316LN (1.4429). These materials being the accepted standards throughout the UHV vacuum industry. Both Stainless Steels are low carbon varieties designed to avoid inter-granular corrosion after welding. 316LN has the additional advantages of a lower magnetic permeability, harder knife edge, and high temperature H₂ degassing at up to 950°C. Full traceability is available on all materials used.

Protective mouldings and suitable packing ensures that the flanges reach the customer in perfect condition for use on UHV equipment. The product range includes blank, bored and rotatable flanges in all of the internationally approved sizes. Other sizes and special flanges are available to order.

All given dimensions are nominal in mm.

*OFHC: Oxygen-free high conductivity.

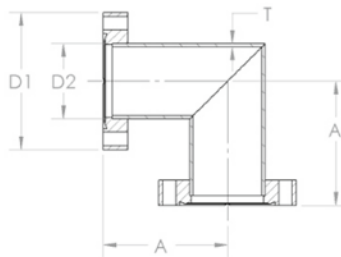
**316L (1.4404) available on request.



Elbows, Tees and Crosses

CF 90 DEGREE MITRED ELBOW FIXED - STAINLESS STEEL

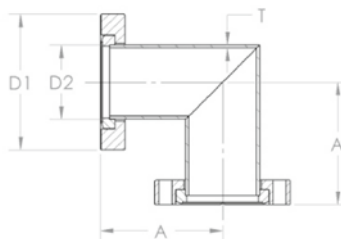
P/N	DN	A	D1	D2	T
EL16	16	38	34	19	1.6
EL35	35	63	70	38	1.6
EL63	63	105	114	64	1.6
EL100	100	135	152	102	1.6
EL150	150	167	203	152	2.0
EL200	200	203	254	203	2.0



Bolt holes in-line, straddled are available on request.

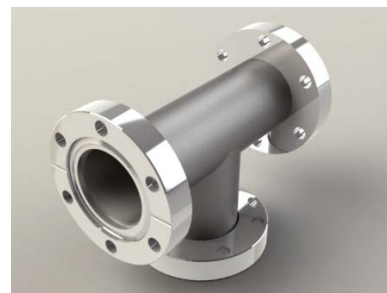
CF 90 DEGREE MITRED ELBOW ROTATABLE - STAINLESS STEEL

P/N	DN	A	D1	D2	T
EL16R	16	38	34	19	1.6
EL35R	35	63	70	38	1.6
EL63R	63	105	114	64	1.6
EL100R	100	135	152	102	1.6
EL150R	150	167	203	152	2.0
EL200R	200	203	254	203	2.0

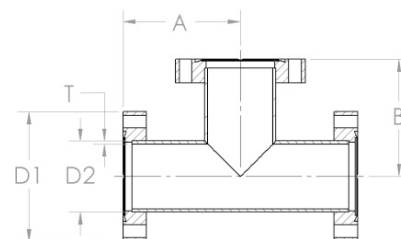


CF TEE FIXED - STAINLESS STEEL

P/N	DN	A	B	D1	D2	T
TE16	16	38	38	34	19	1.6
TE35	35	63	63	70	38	1.6
TE63	63	105	105	114	64	1.6
TE100	100	135	135	152	102	1.6
TE150	150	167	167	203	152	2.0
TE200	200	203	203	254	203	2.0

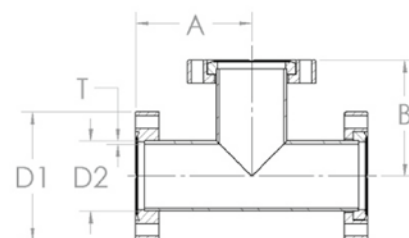
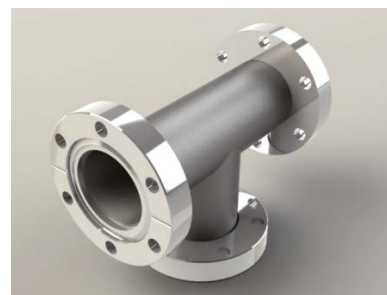


Bolt holes in-line, straddled are available on request.



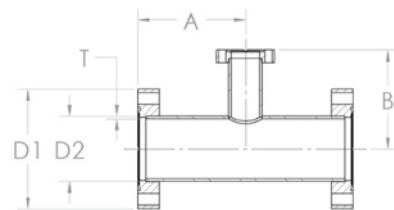
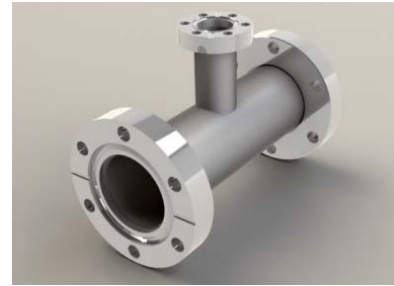
CF TEE ROTATABLE - STAINLESS STEEL

P/N	DN	A	B	D1	D2	T
TE16R	16	38	38	34	19	1.6
TE35R	35	63	63	70	38	1.6
TE63R	63	105	105	114	64	1.6
TE100R	100	135	135	152	102	1.6
TE150R	150	167	167	203	152	2.0
TE200R	200	203	203	254	203	2.0



CF UNEQUAL TEE FIXED - STAINLESS STEEL

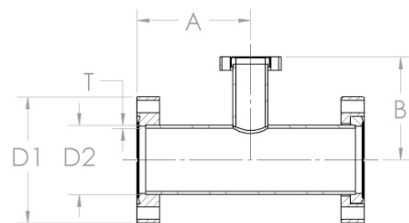
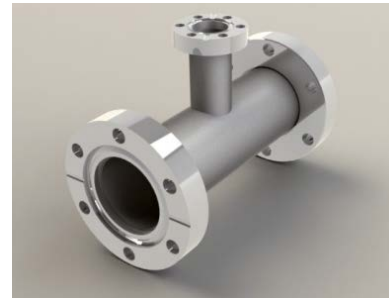
P/N	DN	A	B	D1	D2	T
UTE3516	35/16	63	60	70	38	1.6
UTE6316	63/16	105	77	114	64	1.6
UTE6335	63/35	105	77	114	64	1.6
UTE1016	100/16	135	95	152	102	1.6
UTE1035	100/35	135	95	152	102	1.6
UTE1063	100/63	135	95	152	102	1.6
UTE1516	150/16	167	120	203	152	2.0
UTE1535	150/35	167	120	203	152	2.0
UTE1563	150/63	167	120	203	152	2.0
UTE1510	150/100	167	120	203	152	2.0



Bolt holes in-line, straddled are available on request.

CF UNEQUAL TEE ROTATABLE - STAINLESS STEEL

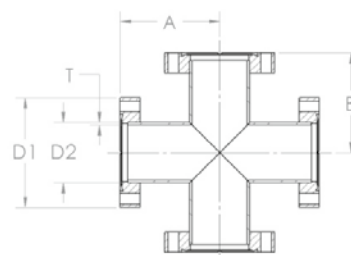
P/N	DN	A	B	D1	D2	T
UTE3516R	35/16	63	60	70	38	1.6
UTE6316R	63/16	105	77	114	64	1.6
UTE6335R	63/35	105	77	114	64	1.6
UTE1016R	100/16	135	95	152	102	1.6
UTE1035R	100/35	135	95	152	102	1.6
UTE1063R	100/63	135	95	152	102	1.6
UTE1516R	150/16	167	120	203	152	2.0
UTE1535R	150/35	167	120	203	152	2.0
UTE1563R	150/63	167	120	203	152	2.0
UTE1510R	150/100	167	120	203	152	2.0



CF 4-WAY CROSS FIXED - STAINLESS STEEL

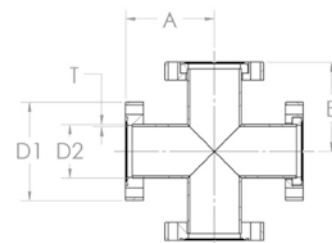
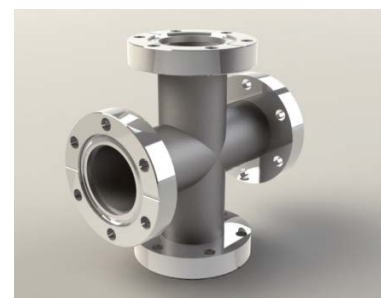
P/N	DN	A	B	D1	D2	T
X16	16	38	38	34	19	1.6
X35	35	63	63	70	38	1.6
X63	63	105	105	114	64	1.6
X100	100	135	135	152	102	1.6
X150	150	167	167	203	152	2.0
X200	200	203	203	254	203	2.0

Bolt holes in-line, straddled are available on request.



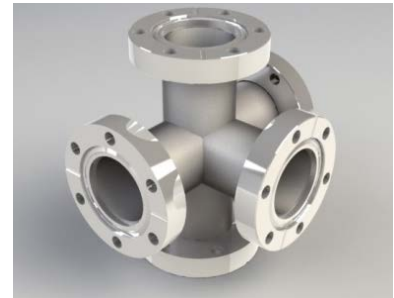
CF 4-WAY CROSS ROTATABLE - STAINLESS STEEL

P/N	DN	A	B	D1	D2	T
X16R	16	38	38	34	19	1.6
X35R	35	63	63	70	38	1.6
X63R	63	105	105	114	64	1.6
X100R	100	135	135	152	102	1.6
X150R	150	167	167	203	152	2.0
X200R	200	203	203	254	203	2.0

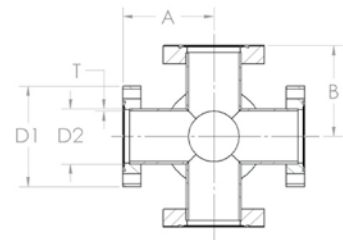


CF 5-WAY CROSS FIXED - STAINLESS STEEL

P/N	DN	A	B	D1	D2	T
FWX16	16	38	38	34	19	1.6
FWX35	35	63	63	70	38	1.6
FWX63	63	105	105	114	64	1.6
FWX100	100	135	135	152	102	1.6
FWX150	150	167	167	203	152	2.0
FWX200	200	203	203	254	203	2.0

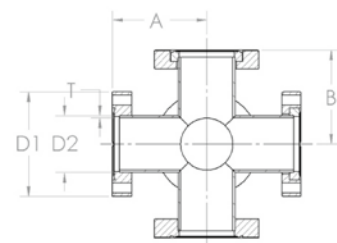


Bolt holes in-line, straddled are available on request.



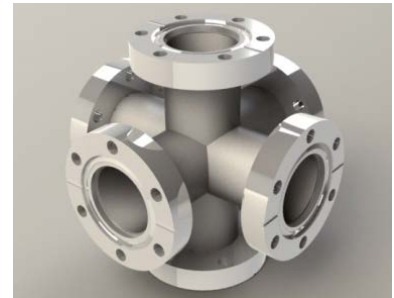
CF 5-WAY CROSS ROTATABLE - STAINLESS STEEL

P/N	DN	A	B	D1	D2	T
FWX16R	16	38	38	34	19	1.6
FWX35R	35	63	63	70	38	1.6
FWX63R	63	105	105	114	64	1.6
FWX100R	100	135	135	152	102	1.6
FWX150R	150	167	167	203	152	2.0
FWX200R	200	203	203	254	203	2.0

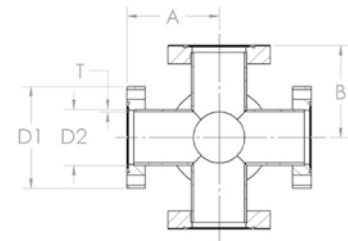


CF 6-WAY CROSS FIXED - STAINLESS STEEL

P/N	DN	A	B	D1	D2	T
XX16	16	38	38	34	19	1.6
XX35	35	63	63	70	38	1.6
XX63	63	105	105	114	64	1.6
XX100	100	135	135	152	102	1.6
XX150	150	167	167	203	152	2.0
XX200	200	203	203	254	203	2.0

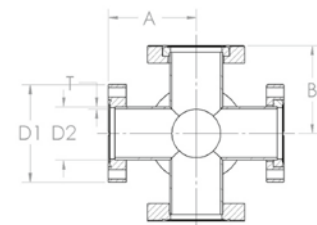
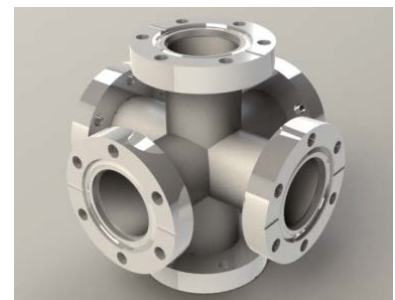


Bolt holes in-line, straddled are available on request.



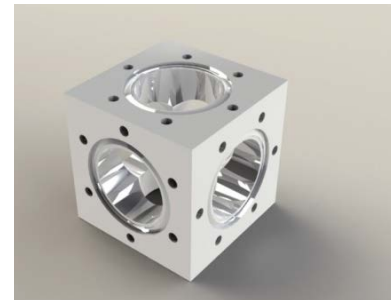
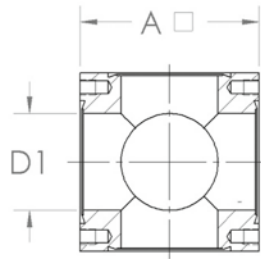
CF 6-WAY CROSS ROTATABLE - STAINLESS STEEL

P/N	DN	A	B	D1	D2	T
XX16R	16	38	38	34	19	1.6
XX35R	35	63	63	70	38	1.6
XX63R	63	105	105	114	64	1.6
XX100R	100	135	135	152	102	1.6
XX150R	150	167	167	203	152	2.0
XX200R	200	203	203	254	203	2.0



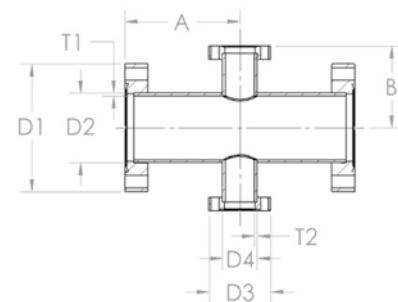
CF CUBE - STAINLESS STEEL

P/N	DN	A	D1
CUBE16	16	34.6	15.8
CUBE35	35	74.0	38.1
CUBE63	63	127.0	64.0
CUBE100	100	160.0	101.6
CUBE150	150	235.0	149.7



CF 4-WAY REDUCING CROSS FIXED - STAINLESS STEEL

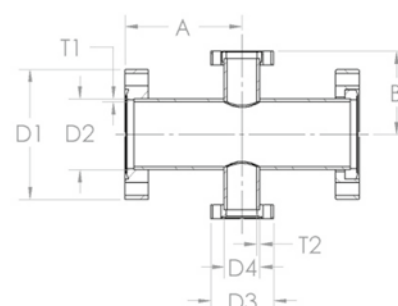
P/N	DN	A	B	D1	D2	T1	D3	D4	T2
UX3516	35/16	63	60	70	38	1.6	34	19	1.6
UX6316	63/16	105	77	114	64	1.6	34	19	1.6
UX6335	63/35	105	77	114	64	1.6	70	38	1.6
UX1016	100/16	135	95	152	102	1.6	34	19	1.6
UX1035	100/35	135	95	152	102	1.6	70	38	1.6
UX1063	100/63	135	95	152	102	1.6	114	64	1.6
UX1535	150/35	167	120	203	152	2.0	70	38	1.6
UX1563	150/63	167	120	203	152	2.0	114	64	1.6
UX1510	150/100	167	120	203	152	2.0	152	102	1.6



Bolt holes in-line, straddled are available on request.

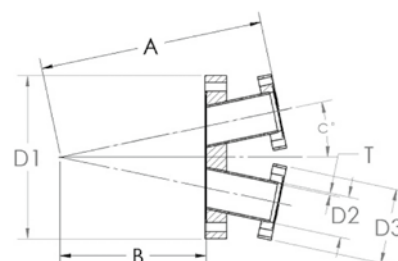
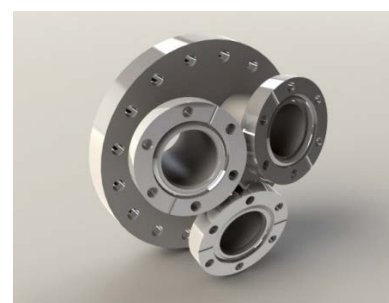
CF 4-WAY REDUCING CROSS ROTATABLE - STAINLESS STEEL

P/N	DN	A	B	D1	D2	T1	D3	D4	T2
UX3516R	35/16	63	60	70	38	1.6	34	19	1.6
UX6316R	63/16	105	77	114	64	1.6	34	19	1.6
UX6335R	63/35	105	77	114	64	1.6	70	38	1.6
UX1016R	100/16	135	95	152	102	1.6	34	19	1.6
UX1035R	100/35	135	95	152	102	1.6	70	38	1.6
UX1063R	100/63	135	95	152	102	1.6	114	64	1.6
UX1535R	150/35	167	120	203	152	2.0	70	38	1.6
UX1563R	150/63	167	120	203	152	2.0	114	64	1.6



CF CLUSTER FLANGE - STAINLESS STEEL

P/N	DN	No. OF PORTS	A	B	C	D1	D2	D3	T
CF3P	35	3	208	135	11.9°	152	38	70	1.6
CF4P	35	4	250	167	13.0°	203	38	70	1.6





neyco

30 avenue de la Paix
92170 VANVES - France
Tel: +33(0)1 41 90 50 50
Fax: +33(0)1 41 90 50 51

www.neyco.fr



Vacuum F 2013-2

neyco