

# VACUUM CF COMPONENTS

---

F

- Bellows and Hoses..... F 27

The CF series flanges use the well proven captured copper gasket sealing principle which is now almost universally used in the UHV industry. The seal - an OFHC\* copper gasket - is held between the knife edges of a pair of CF flanges. On tightening the retaining bolts, the knife edges cut into the gasket and force the copper both axially as well as radially outwards to the flange. The material is thus enclosed and cannot flow, even at high bakeout temperatures. This sealing method has a maximum bakeout temperature of 450°C and is suitable for vacuum applications to  $10^{-12}$  mbar.

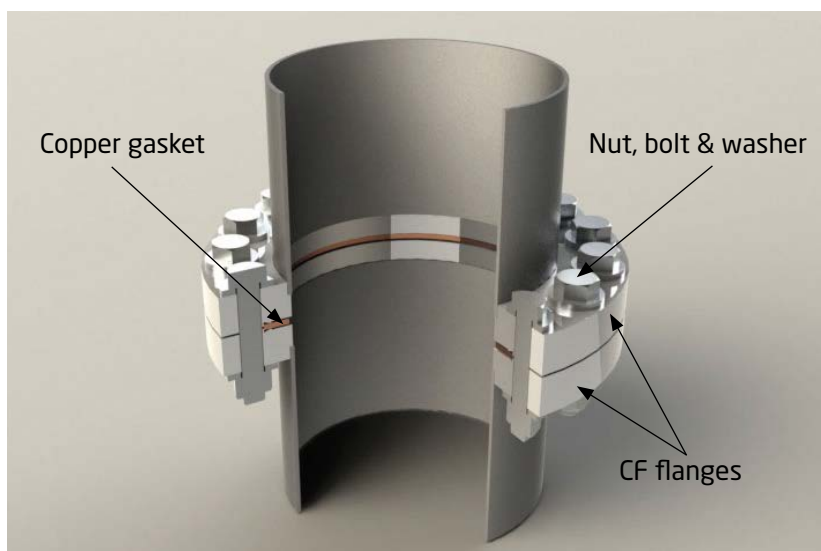
All CF flanges are manufactured from specially selected, high quality Stainless Steel - 304L\*\* (1.4306) or the higher specification 316LN (1.4429). These materials being the accepted standards throughout the UHV vacuum industry. Both Stainless Steels are low carbon varieties designed to avoid inter-granular corrosion after welding. 316LN has the additional advantages of a lower magnetic permeability, harder knife edge, and high temperature H<sub>2</sub> degassing at up to 950°C. Full traceability is available on all materials used.

Protective mouldings and suitable packing ensures that the flanges reach the customer in perfect condition for use on UHV equipment. The product range includes blank, bored and rotatable flanges in all of the internationally approved sizes. Other sizes and special flanges are available to order.

All given dimensions are nominal in mm.

\*OFHC: Oxygen-free high conductivity.

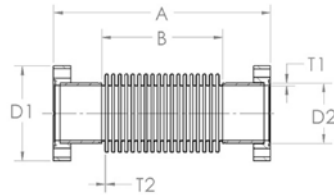
\*\*316L (1.4404) available on request.



# Bellows and Hoses

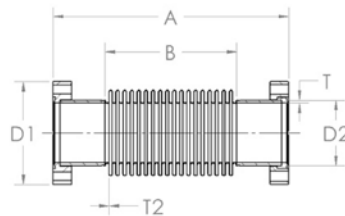
## CF FLEXIBLE BELLOWS FIXED - STAINLESS STEEL

P/N	DN	A	B	D1	D2	T1	T2
FXB16	16	110	58	34	18.5	1.75	0.1
FXB35	35	160	91	70	44.5	2.00	0.2
FXB63	63	250	80	114	76.0	3.00	0.2
FXB100	100	250	143	152	108	3.00	0.4



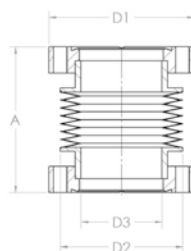
## CF FLEXIBLE BELLOWS ROTATABLE - STAINLESS STEEL

P/N	DN	A	B	D1	D2	T1	T2
FXB16R	16	110	58	34	18.5	1.75	0.1
FXB35R	35	160	91	70	44.5	2.00	0.2
FXB63R	63	250	80	114	76.0	3.00	0.2
FXB100R	100	250	143	152	108	3.00	0.4



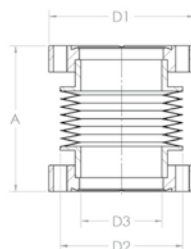
## CF EDGE WELDED BELLOWS FIXED - STAINLESS STEEL

P/N	DN	CONVOLUTIONS	STROKE	A	D1	D2	D3
EWB16	16	19	23	108	34	31.5	16.0
EWB35	35	13	26	155	70	59.0	38.0
EWB63	63	13	33	200	114	90.0	60.3
EWB100	100	11	33	219	152	132.0	104.0



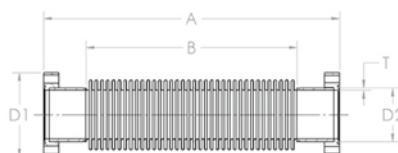
## CF EDGE WELDED BELLOWS ROTATABLE - STAINLESS STEEL

P/N	DN	CONVOLUTIONS	STROKE	A	D1	D2	D3
EWB16R	16	19	23	108	34	31.5	16.0
EWB35R	35	13	26	155	70	59.0	38.0
EWB63R	63	13	33	200	114	90.0	60.3
EWB100R	100	11	33	219	152	132.0	104.0



## CF FLEXIBLE HOSE - STAINLESS STEEL

P/N	DN	A	B	D1	D2	T1	P/N	DN
FX16CF25	16	250	210	34	16.0	2	FX16CF25R	16
FX16CF50	16	500	460	34	16.0	2	FX16CF50R	16
FX16CF75	16	750	710	34	16.0	2	FX16CF75R	16
FX16CF100	16	1000	960	34	16.0	2	FX16CF100R	16
FX35CF25	35	250	150	70	44.5	2	FX35CF25R	35
FX35CF50	35	500	400	70	44.5	2	FX35CF50R	35
FX35CF75	35	750	650	70	44.5	2	FX35CF75R	35
FX35CF100	35	1000	900	70	44.5	2	FX35CF100R	35
FX63CF25	63	250	126	114	76.0	3	FX63CF25R	63
FX63CF50	63	500	376	114	76.0	3	FX63CF50R	63
FX63CF75	63	750	626	114	76.0	3	FX63CF75R	63
FX63CF100	63	1000	876	114	76.0	3	FX63CF100R	63
FX100CF25	100	250	146	152	108.0	3	FX100CF25R	100
FX100CF50	100	500	396	152	108.0	3	FX100CF50R	100
FX100CF75	100	750	646	152	108.0	3	FX100CF75R	100
FX100CF100	100	1000	896	152	108.0	3	FX100CF100R	100

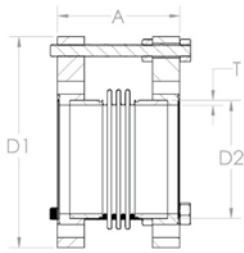


Note: both flanges fixed.

Note: one flange fixed, other rotatable.

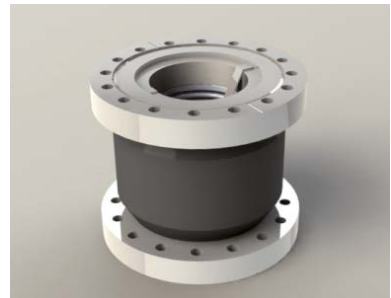
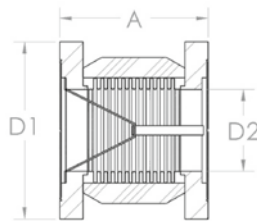
## CF PORT ALIGNER - STAINLESS STEEL

P/N	DN	A	D1	D2	T
PA3535	35	80	70	38	1.6
PA6363	63	80	114	64	1.6
PA1010	100	80	152	102	1.6



## CF VIBRATION ISOLATORS - STAINLESS STEEL

P/N	DN	A	D1	D2
F35VBD	35	90	70	24
F63VBD	63	96	114	52
F100VBD	100	99	152	76





**neyco**

30 avenue de la Paix  
92170 VANVES - France  
Tel: +33(0)1 41 90 50 50  
Fax: +33(0)1 41 90 50 51

**[www.neyco.fr](http://www.neyco.fr)**



Vacuum F 2013-2

**neyco**